

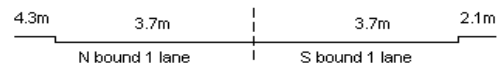
YEAR 2014

COVERAGE (B) STATION 2203

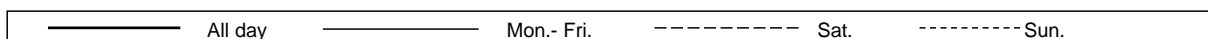
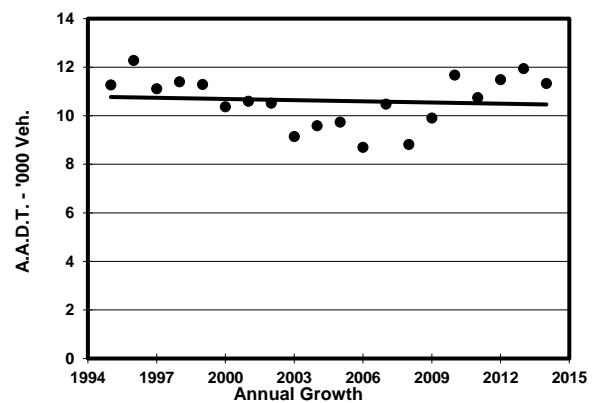
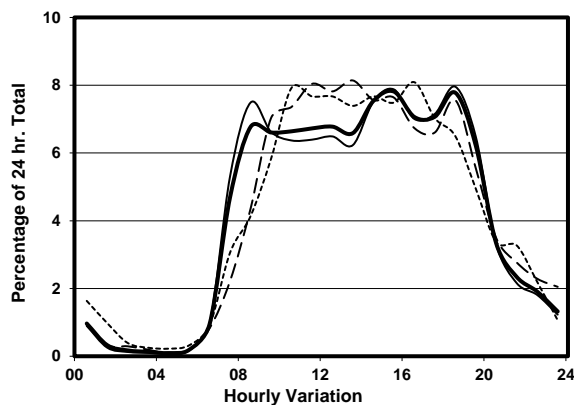
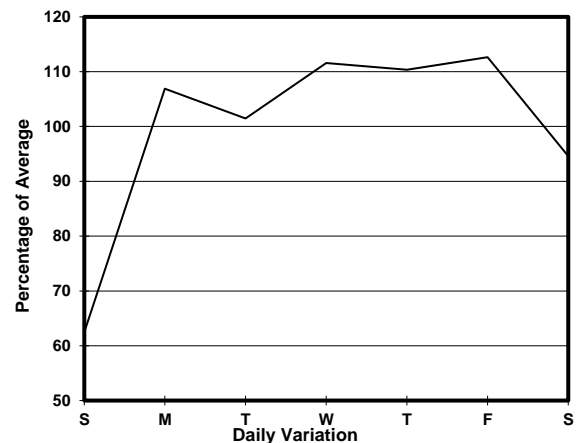
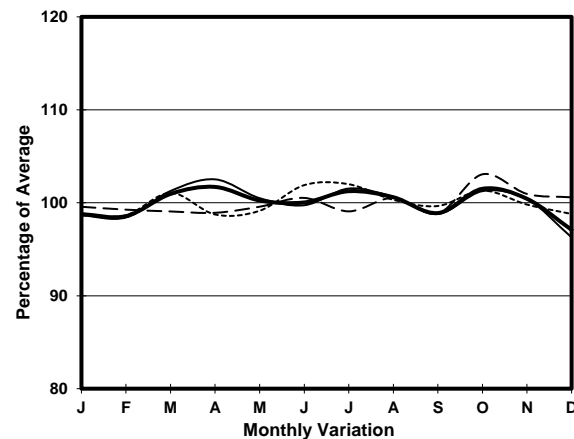
ROAD NETWORK MAJOR

ROAD TYPE DISTRICT DISTRIBUTOR

LINK STUBBS RD (from WAN CHAI GAP to WONG NAI CHUNG GAP RD)



1. TRAFFIC FLOW VARIATION AND GROWTH



2. TRAFFIC CHARACTERISTICS (BY DIRECTION)

Parameter	All - Day	Mon. - Fri.	Sat.	Sun.
SOUTH BOUND				
A.A.D.T.	6000	6650	5770	3880
R 12 / 24 - %	81	81	81.3	80.6
R 16 / 24 - %	95.9	96.1	95.5	94.3
AM Peak Hour	0800-0900	0800-0900	0900-1000	0900-1000
One-way flow at AM peak hour	380	460	400	220
T - % (AM)	-	11.8	-	-
PM Peak Hour	1800-1900	1800-1900	1800-1900	1600-1700
One-way flow at PM peak hour	490	570	430	340
T - % (PM)	-	15.1	-	-
Prop.of commercial vehicles - 16 hr.	-	11.7	-	-
NORTH BOUND				
A.A.D.T.	5330	5900	5170	3340
R 12 / 24 - %	83.3	84	80.8	80.3
R 16 / 24 - %	95.8	96.2	94.7	94.2
AM Peak Hour	0900-1000	0800-0900	0900-1000	0900-1000
One-way flow at AM peak hour	410	480	370	200
T - % (AM)	-	6	-	-
PM Peak Hour	1700-1800	1700-1800	1800-1900	1600-1700
One-way flow at PM peak hour	390	440	400	250
T - % (PM)	-	7.8	-	-
Prop.of commercial vehicles - 16 hr.	-	11.3	-	-

3. OTHER INFORMATION AND COMMENT

Coverage (B) Station 2203
Year 2014

4. Vehicle classification and occupancy - Monday to Friday

Time		Class of vehicle									
		Motor	Private	Taxi	Private	PLB	Goods veh.		Non	Fr. Bus	
		Cycle	Car		LB		Light	M & H	Fr. Bus	SD	DD
0700-0800	Pro	3.2	40.1	42.2	3.2	3.2	1.1	0.0	5.3	0.0	1.8
	Ocp	1.0	1.4	1.9	10.0	6.3	1.0	0.0	12.0	0.0	50.1
0800-0900	Pro	0.0	67.7	18.0	2.4	1.5	1.9	1.0	6.3	0.0	1.1
	Ocp	0.0	1.6	2.2	10.4	6.7	1.0	1.0	15.4	0.0	35.1
0900-1000	Pro	0.8	67.7	14.0	2.0	0.4	10.0	0.8	3.2	0.0	1.0
	Ocp	1.0	1.7	1.7	2.8	3.0	1.9	1.5	8.6	0.0	27.0
1000-1100	Pro	0.5	58.9	17.4	0.5	0.9	14.6	2.4	3.8	0.0	1.1
	Ocp	1.0	1.4	1.9	1.0	3.0	1.5	1.0	11.0	0.0	15.9
1100-1200	Pro	0.0	58.9	13.2	4.2	1.2	13.2	1.2	6.6	0.0	1.5
	Ocp	0.0	1.5	2.1	5.4	6.0	1.7	1.5	12.5	0.0	24.2
1200-1300	Pro	1.6	56.8	14.5	0.5	2.1	11.8	2.1	9.1	0.0	1.5
	Ocp	1.3	1.5	2.1	3.0	7.5	1.5	1.3	19.5	0.0	29.9
1300-1400	Pro	0.0	55.4	17.9	0.5	1.1	10.9	2.2	10.3	0.0	1.8
	Ocp	0.0	1.5	2.0	3.0	5.0	1.6	2.0	23.1	0.0	26.7
1400-1500	Pro	0.5	44.1	23.9	0.5	2.1	8.5	3.2	15.9	0.0	1.2
	Ocp	1.0	1.5	1.5	4.0	8.3	1.8	1.7	19.9	0.0	32.1
1500-1600	Pro	1.3	55.8	20.1	0.6	1.3	7.5	0.0	11.9	0.0	1.6
	Ocp	1.0	1.6	2.1	10.0	2.5	1.8	0.0	24.1	0.0	31.2
1600-1700	Pro	0.0	70.2	12.2	0.5	0.9	7.5	1.4	6.1	0.0	1.3
	Ocp	0.0	1.5	2.2	16.0	6.0	1.8	1.0	16.8	0.0	39.5
1700-1800	Pro	1.0	67.9	15.3	1.4	0.0	5.3	0.5	7.6	0.0	1.1
	Ocp	1.0	1.5	1.9	6.3	0.0	2.0	1.0	14.7	0.0	71.8
1800-1900 Peak hour	Pro	1.4	59.8	22.8	0.0	0.5	2.7	0.5	11.4	0.0	0.9
	Ocp	1.0	1.6	1.8	0.0	8.0	1.7	1.0	31.1	0.0	58.0
1900-2000	Pro	0.0	59.6	23.1	0.0	1.0	1.9	0.0	13.5	0.0	1.0
	Ocp	0.0	1.4	1.8	0.0	4.5	2.0	0.0	27.2	0.0	28.1
2000-2100	Pro	1.2	59.2	13.0	0.0	2.4	2.4	0.0	18.9	0.0	3.0
	Ocp	1.0	1.5	1.6	0.0	4.0	1.5	0.0	20.0	0.0	24.3
2100-2200	Pro	4.9	39.0	29.3	0.0	0.0	2.4	0.0	19.5	0.0	4.9
	Ocp	1.0	1.9	2.0	0.0	0.0	1.0	0.0	14.3	0.0	15.0
2200-2300	Pro	4.3	47.8	28.3	2.2	0.0	4.3	0.0	8.7	0.0	4.3
	Ocp	1.0	1.5	1.4	3.0	0.0	1.5	0.0	27.3	0.0	15.6
16 hours	Pro	0.8	59.4	18.7	1.1	1.1	7.3	1.1	9.0	0.0	1.4
	Ocp	1.0	1.5	1.9	6.4	5.8	1.7	1.4	20.5	0.0	32.4

Legend

Pro. Proportion of vehicles in % (Sum may not add up to 100% due to figure rounding)
Ocp. Average occupancy of vehicles
M&H Medium and Heavy